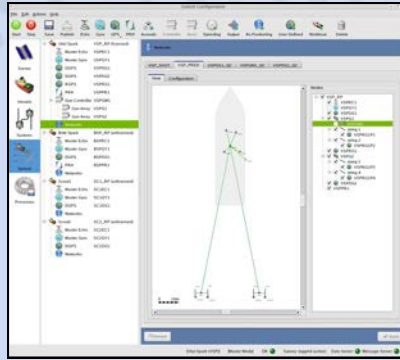


# Gator II

## Command and Control for Seabed, TZ, and EM Operations

### LEADER IN SURVEY OPTIMISATION

ION Concept Systems (CSL) has been on the cutting edge of survey acquisition since the 1980s. Through close customer collaboration, CSL continuously develops innovative tools and techniques to provide superior data quality in the most safe, efficient manner — informing operations and improving asset management.



### A STRONG FOUNDATION

To meet today's high resolution and complex survey requirements, ION is simplifying and enhancing core Gator® functionality. Gator II builds on the advanced capabilities that have made it the leading seabed command and control system for over 15 years with new workflows and features specific to OBC, OBN, TZ, and EM applications.

### SURVEY WIDE ARCHITECTURE & CONTROL

Gator II features a new central data management platform that will serve as the foundation for integrated command and control. This survey-wide perspective increases efficiency and mitigates risk associated with distributed, multi-vessel operations. Gator's seamless architecture simplifies and automates vessel navigation, spread positioning, data management and QC processes across the seismic acquisition workflow.

### ENHANCING INDUSTRY- LEADING FUNCTIONALITY

Gator II will build upon existing industry-leading capabilities to optimise seismic data acquisition and geophysical objectives.

- More simple, automated workflows and processes
- More flexible distributed multi-vessel acquisition roles
- More accurate, efficient spread and positioning management
- Real-time survey planning and optimisation based on field conditions
- More rugged suite of hardware options for harsh environments
- Advanced diagnostics alert operator of issues and specific area to address
- Real-time QC provides confidence in data set
- Custom, automated survey-wide deliverables and reporting

### Gator II Phased Development

Phased Gator II development accelerates deployment of valuable new capabilities to the field.

#### 1. New Infrastructure & Hardware

Single architecture centralizes data management and control, simplifying and automating processes. New rugged hardware suitable for harsh, exposed environments.

#### 2. Advanced Positioning & Real-time Survey Management

Efficient, accurate source and receiver positioning combined with advanced survey management optimizes acquisition in real time.

#### 3. Multi-vessel Operations

Safe, efficient operations around in-field obstacles and pipelines with flexible master/slave vessel roles.

#### 4. Enhanced Diagnostics & QC

Enhanced diagnostics and alarm-based QC pinpoint specific concerns to address and troubleshoot.

#### 5. Survey-wide Deliverables & Consistent, Custom Reports

A broad range of deliverables are automatically generated in custom reports.