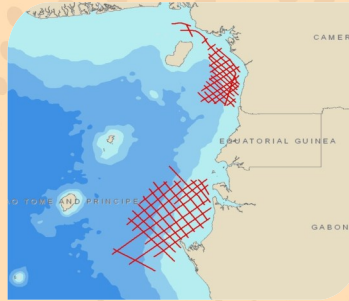


# EquatorSPAN

## PROGRAM OVERVIEW

With the increasing interest and activity levels of many oil and gas companies in the hydrocarbon provinces of the West African deepwater basins, ION's GeoVentures group designed EquatorSPAN™, a 2D seismic program set in the equatorial Atlantic margin offshore Cameroon, and Northern Gabon and depth imaged by ION's GX Technology group. The program was developed with the joint cooperation of SNH, Cameroon, and DGH, Gabon.



Designed to advance the geoscientific understanding of the region, EquatorSPAN reveals the tectonic architecture of the West African Gulf of Guinea margin. The program comprises over 4,400 km of new data and provides insight into the area's tectonic fabric and basin formation. EquatorSPAN also provides a risk-reduction strategy for exploration in the region's transform fault margin.

## PROGRAM OBJECTIVES

- To understand the crustal architecture of West Africa's Atlantic Margin in order to promote the unrealized hydrocarbon potential of the region
- To improve understanding of basin formation in the region
- To map the lateral extent of salt, transform faults and the mini-basins along their boundaries
- To solve issues related to hydrocarbon expulsion and timing and the thickness of cretaceous units elemental to the development of new hydrocarbon concepts

## KEY COMPONENTS

- Program includes over 4,400 km of new data in Cameroon, and Northern Gabon acquired using long, 10,000 m offsets and 18 sec record length
- Data in Northern Gabon (2,700 km) reveals the rift architecture and very good potential in the mini basins to the North
- Data in Cameroon (1,700 km) shows significantly improved imaging and stratigraphic detail. Cretaceous sequences can now be clearly identified and tied to the Niger Delta.
- Wide spread presence of key hydrocarbon indicators seen in the data showing high potential for deeper discoveries

## About BasinSPANS™

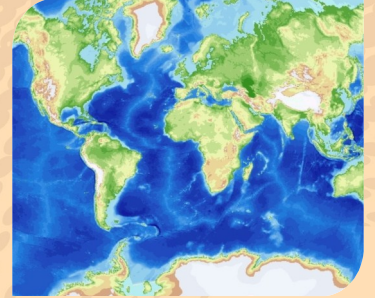
ION's BasinSPANS (SPANS) are geologically inspired, basin-scale seismic data programs acquired and depth-imaged by ION's unmatched GX Technology experts using the most advanced geological and geophysical processing tools available. They provide upstream companies with the ability to evaluate the geologic evolution, deep basin architecture and depositional and structural histories of entire petroleum systems in a region.

Unlike conventional multi-client seismic surveys, BasinSPANS are custom designed in collaboration with ION's GeoVentures group, regional experts and the O&G companies. Once the program objectives are agreed upon, ION serves as project manager and applies the best survey design, acquisition and processing technologies with a proprietary mindset that adds value and achieves exceptional results. Such in-depth data and the associated interpretation tools greatly assists asset managers with portfolio management and provides significant risk mitigation as they develop exploration and appraisal programs with greater confidence.

ION owns one of the most up-to-date seismic data libraries in the industry, consisting of 2D, 3D and full-wave (multicomponent) data from around the world.

**DELIVERABLES, WITH FULL PARTICIPATION, INCLUDE**

- Navigation merged shot records (SEG Y)
- Post-processed Kirchhoff PreSDM stack (SEG Y)
- Final depth, interval velocity model (SEG Y)
- Final PreSTM gathers, stack and velocity model (SEG Y)
- Structural and stratigraphic interpretation
- Gravity and magnetic data
- Final acquisition, processing and interpretation reports



**Contact Details**

Scott McFarlane

VP Sales Operations

Phone: +1 281 781 1030

Email:

[scott.mcfarlane@iongeo.com](mailto:scott.mcfarlane@iongeo.com)

**Corporate Office**

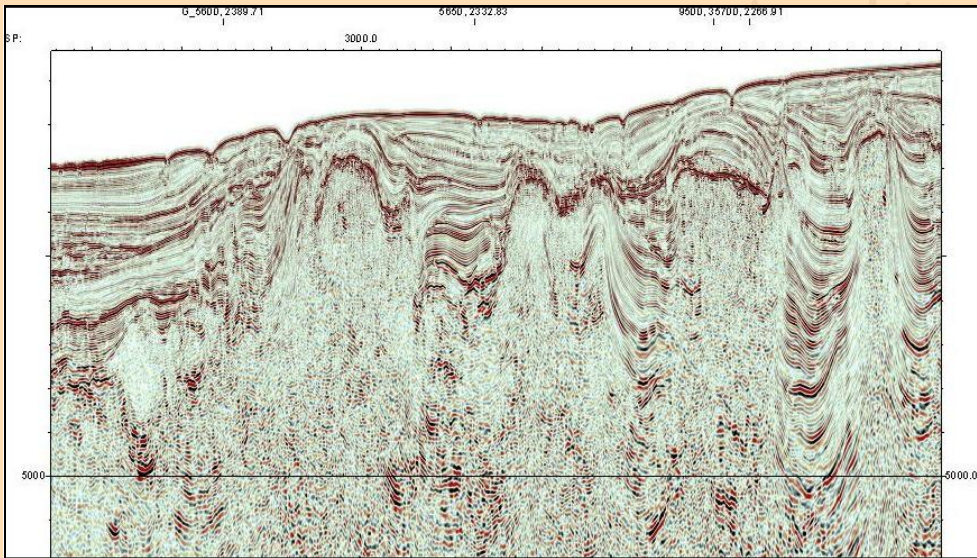
2105 City West Blvd., Suite 900

Houston, TX 77042

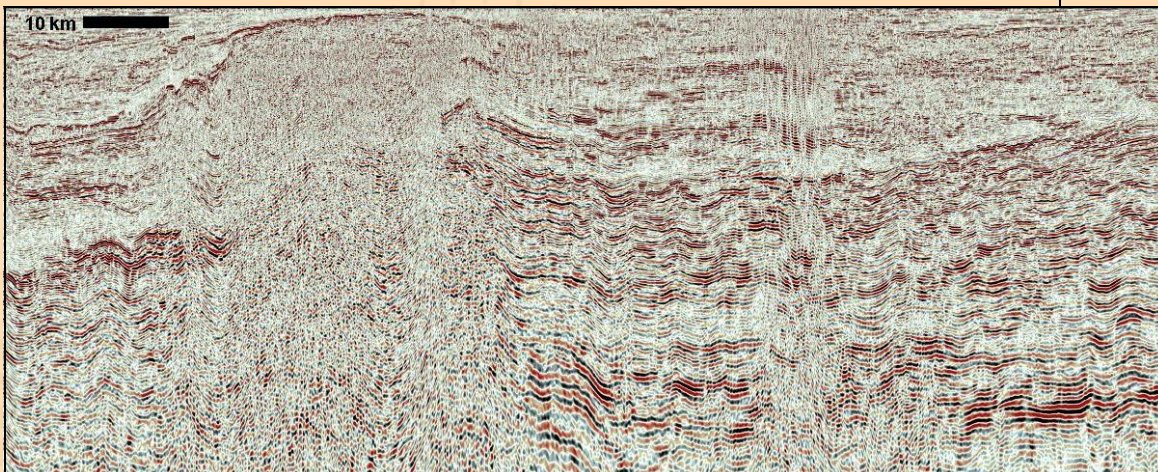
Phone: +1 713 789 7250

Fax: +1 713 789 7201

Email: [BasinSPAN@iongeo.com](mailto:BasinSPAN@iongeo.com)



Line from Gabon



Line crossing Cameroon volcanic chain from Niger Delta to Cameroon